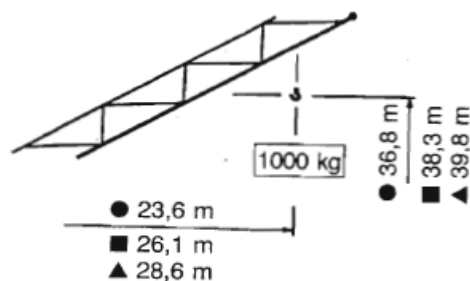


PEINER

Schnellaufbaukran SMK 205/1

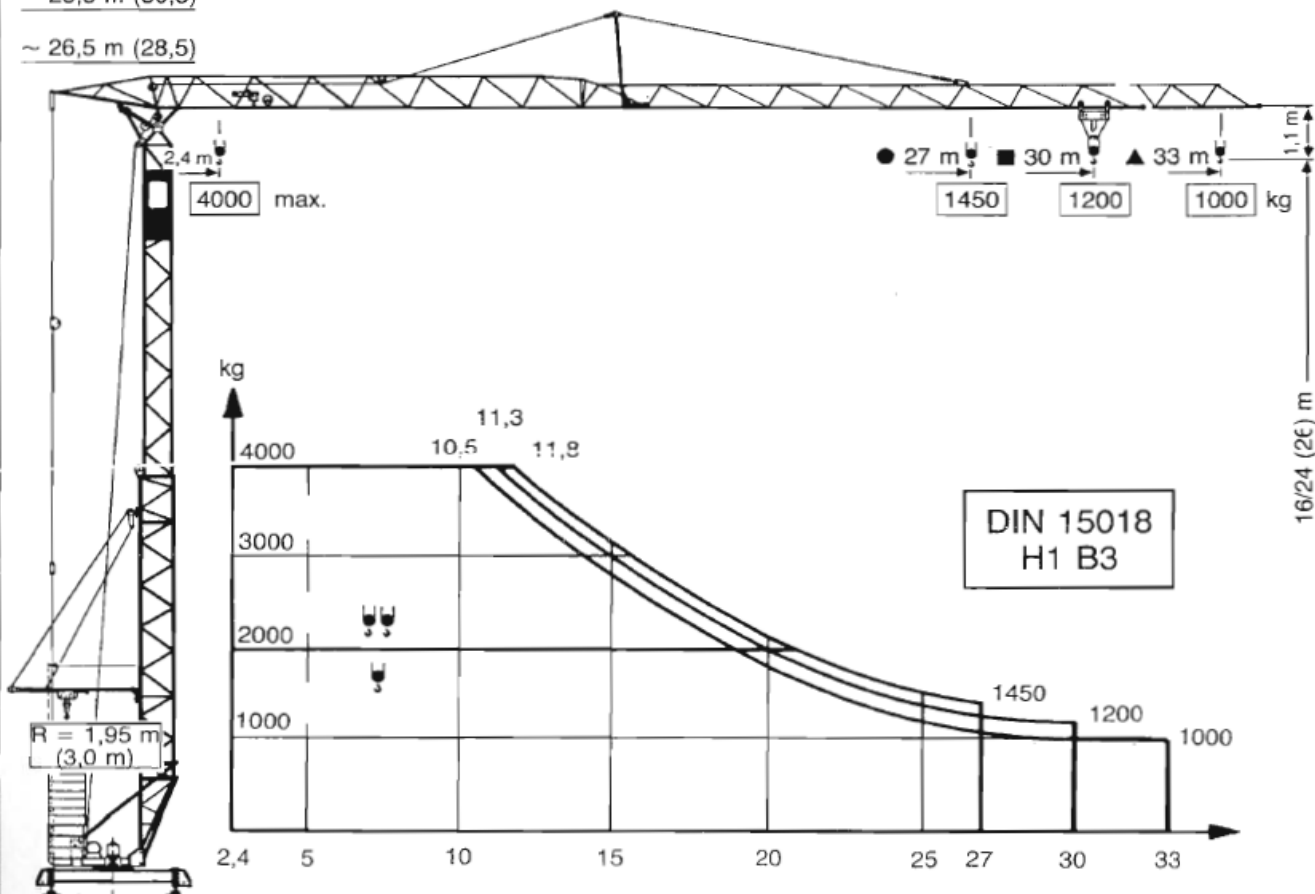
Fast self erecting tower crane
Grue à montage rapide

Max. Tragfähigkeit Lifting capacity Force de levage	4,0 t
Max. Ausladung Radius Portée	33 m
Max. Nutzlastmoment Load moment Couple de charge utile	473 kNm



~ 28,5 m (30,5)

~ 26,5 m (28,5)








PEINER SCHNELLAUFBAUKRAN · TOWER CRANE · GRUE A TOUR

TRAGLASTEN

SMK 205/1

Hubseil 2/4 fach eingeschert

Ausladung Radius Portées	m	11,8		15	20,7		21	27	30	33	30°  m	 kg
		11,3	10,5		19,7	18,8						
27m 	kg	4000	2920	2000	1960	1450					23,6	1000
30m 	kg	4000	2770	2000	1850	1370	1200				26,1	1000
33m 	kg	4000	2610	2000	1750	1290	1130	1000			28,6	1000